

What is CHAS?

The Community Health Assist Scheme (CHAS) is for all Singaporeans, regardless of your age and income. It is your partner in healthcare, providing subsidies for medical and dental care, at more than 1,000 CHAS clinics islandwide.

CHAS Benefits

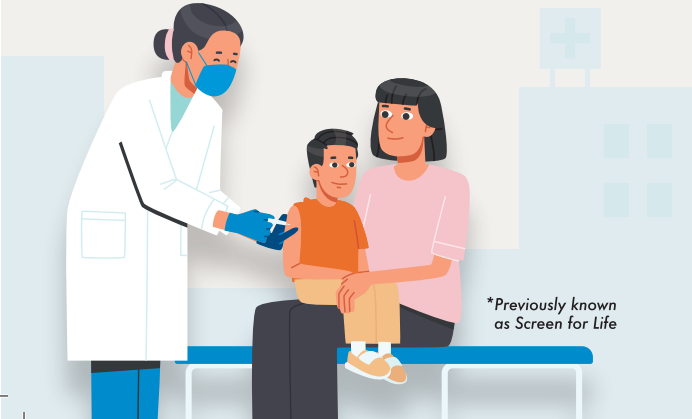
With CHAS, you can receive subsidies at participating GP and dental clinics near you. The level of subsidies you receive will depend on the type of card you hold.

CHAS Subsidies for every Singaporean					
Selected chronic conditions	✓	✓	✓	✓	✓
Common illnesses	—	✓	✓	✓	✓
Selected dental services	—	✓	✓	✓	✓
Healthier SG Screening*	✓	✓	✓	✓	✓

Subsidies for Nationally-recommended Vaccinations and Childhood Developmental Screening

Singapore Citizens who meet the criteria under the National Childhood Immunisation Schedule (NCIS) and National Adult Immunisation Schedule (NAIS), are eligible for subsidies for nationally-recommended vaccinations.

All Singaporean children (from ages 0 to 6) who attend the Childhood Developmental Screening at CHAS clinics according to the recommended touchpoints, will be eligible for subsidies.



Income Criteria

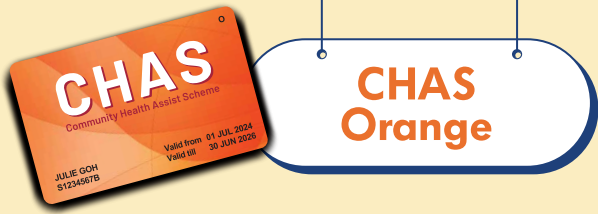
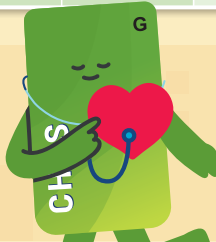
Household monthly income per person (for households with income)	Above \$2,300
Annual Value (AV) of home ¹ (for households with no income)	Above \$31,000



Benefits

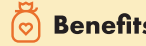
Subsidies		Amount
Selected chronic conditions (Simple) ²	Subsidy limit per visit	\$28
	Yearly cap	\$112
Selected chronic conditions (Complex) ²	Subsidy limit per visit	\$40
	Yearly cap	\$160
Common illnesses ³	Subsidy limit per visit	Not applicable
Selected dental services	Subsidy limit per procedure	Not applicable
Healthier SG Screening ⁴	Fixed fee of \$5 for eligible Singaporeans	

Under the Healthier SG Chronic Tier ⁵		
Selected chronic medications	50% subsidy, with no dollar cap	
All services and other medications	Simple ²	Up to \$28 subsidy per visit, capped at \$80 per year
	Complex ²	Up to \$40 subsidy per visit, capped at \$110 per year



Income Criteria

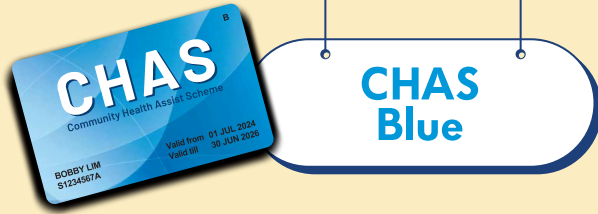
Household monthly income per person (for households with income)	\$1,501–\$2,300
Annual Value (AV) of home ¹ (for households with no income)	\$21,001–\$31,000



Benefits

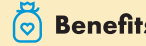
Subsidies		Amount
Selected chronic conditions (Simple) ²	Subsidy limit per visit	\$50
	Yearly cap	\$200
Selected chronic conditions (Complex) ²	Subsidy limit per visit	\$80
	Yearly cap	\$320
Common illnesses ³	Subsidy limit per visit	\$10
Selected dental services	Subsidy limit per procedure	\$50–\$170.50 (denture, crown, root canal treatments only)
Healthier SG Screening ⁴	Fixed fee of \$2 for eligible Singaporeans	

Under the Healthier SG Chronic Tier ⁵		
Selected chronic medications	75% subsidy, with no dollar cap	
All services and other medications	Simple ²	Up to \$50 subsidy per visit, capped at \$130 per year
	Complex ²	Up to \$80 subsidy per visit, capped at \$210 per year



Income Criteria

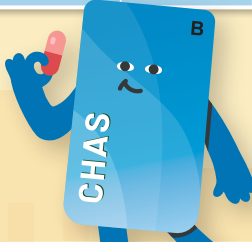
Household monthly income per person (for households with income)	\$1,500 and below
Annual Value (AV) of home (for households with no income)	\$21,000 and below



Benefits

Subsidies		Amount
Selected chronic conditions (Simple) ²	Subsidy limit per visit	\$80
	Yearly cap	\$320
Selected chronic conditions (Complex) ²	Subsidy limit per visit	\$125
	Yearly cap	\$500
Common illnesses ³	Subsidy limit per visit	\$18.50
Selected dental services	Subsidy limit per procedure	\$11–\$256.50 (dependent on procedure)
Healthier SG Screening ⁴	Fixed fee of \$2 for eligible Singaporeans	

Under the Healthier SG Chronic Tier ⁵		
Selected chronic medications	75% subsidy, with no dollar cap	
All services and other medications	Simple ²	Up to \$80 subsidy per visit, capped at \$210 per year
	Complex ²	Up to \$125 subsidy per visit, capped at \$330 per year



Merdeka Generation



Benefits

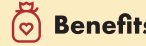
Subsidies		Amount
Selected chronic conditions (Simple) ²	Subsidy limit per visit	\$85
	Yearly cap	\$340
Selected chronic conditions (Complex) ²	Subsidy limit per visit	\$130
	Yearly cap	\$520
Common illnesses ³	Subsidy limit per visit	\$23.50
Selected dental services	Subsidy limit per procedure	\$16–\$261.50 (dependent on procedure)
Healthier SG Screening ⁴	Fixed fee of \$2 for eligible seniors	

Under the Healthier SG Chronic Tier ⁵		
Selected chronic medications	81.25% subsidy, with no dollar cap	
All services and other medications	Simple ²	Up to \$85 subsidy per visit, capped at \$230 per year
	Complex ²	Up to \$130 subsidy per visit, capped at \$350 per year

¹ With effect from 1 January 2025.
² “Simple” refers to visits for a single chronic condition. “Complex” refers to visits for multiple chronic conditions, or a single chronic condition with complication(s).
³ Capped at 24 visits for common illnesses per patient per calendar year, across all CHAS clinics.



Pioneer Generation



Benefits

Subsidies		Amount
Selected chronic conditions (Simple) ²	Subsidy limit per visit	\$90
	Yearly cap	\$360
Selected chronic conditions (Complex) ²	Subsidy limit per visit	\$135
	Yearly cap	\$540
Common illnesses ³	Subsidy limit per visit	\$28.50
Selected dental services	Subsidy limit per procedure	\$21–\$266.50 (dependent on procedure)
Healthier SG Screening ⁴	Free for eligible seniors	

Under the Healthier SG Chronic Tier ⁵		
Selected chronic medications	87.5% subsidy, with no dollar cap	
All services and other medications	Simple ²	Up to \$90 subsidy per visit, capped at \$240 per year
	Complex ²	Up to \$135 subsidy per visit, capped at \$360 per year

⁴ Previously known as Screen for Life. This refers to the cost of screening test(s) and first post-screening consultation. Please scan the QR code for more info.
⁵ Healthier SG enrollees with CHAS/MG/PG cards may choose either the existing CHAS Chronic Tier or Healthier SG Chronic Tier, that would best benefit them based on their medication needs. Subsidies applicable only at their enrolled Healthier SG GP clinic.



How to apply for CHAS?



STEP 1

Go to
www.chas.sg/apply



STEP 2

Click on
'Apply Now'
and sign in
using Singpass



STEP 3

Verify your
household details
and submit your
application

Digital CHAS card is now
available on your Singpass app!



For the latest info,
scan the QR code to visit

www.chas.sg

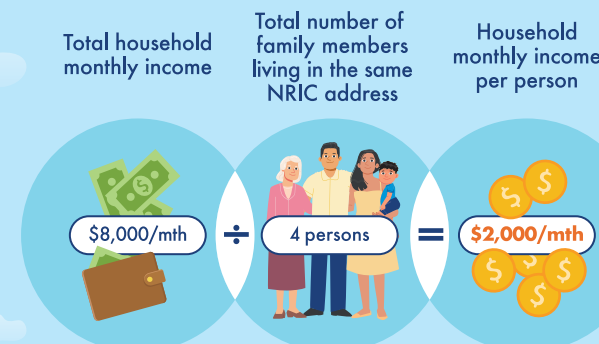
or call
1800-275-2427
(1800-ASK-CHAS)



Information is correct as of May 2025

How is your household monthly income per person calculated?

Total gross household monthly income*
divided by total number of family
members living together**.



What is Annual Value (AV) of home (For households with no income)?

The AV of your home is the estimated gross annual rent if it were to be rented out, excluding furnishings and maintenance fees, as assessed by the Inland Revenue Authority of Singapore (IRAS).



* Gross monthly income refers to basic income, overtime pay, allowances, cash awards, commissions & bonuses.

** Only family members who share the same NRIC address and are related by blood, marriage or legal adoption are included in this calculation.

CHAS Coverage

Chronic Conditions

- Allergic Rhinitis
- Anxiety[†]
- Asthma
- Benign Prostatic Hyperplasia
- Bipolar Disorder[†]
- Chronic Hepatitis B
- Chronic Obstructive Pulmonary Disease
- Dementia
- Diabetes (including Pre-Diabetes)
- Epilepsy
- Gout
- Hypertension (High blood pressure)
- Ischaemic Heart Disease
- Lipid Disorders (e.g. High cholesterol)
- Major Depression[†]
- Nephritis/Nephrosis
- Osteoarthritis
- Osteoporosis
- Parkinson's Disease
- Psoriasis
- Rheumatoid Arthritis
- Schizophrenia[†]
- Stroke

Common Illnesses[#]

- Abdominal pain
 - Cough, cold, flu
 - Diarrhoea
 - Fever
 - Headache
 - Skin infection and rashes
 - Sore eyes
 - Urinary tract infection
- (List is not exhaustive)

[#] Not applicable for CHAS Green

[†] Only claimable at selected clinics.
Please visit www.chas.sg for more information.

Dental Services[#]

Procedure	Subsidy			
	CHAS	CHAS	Merdeka	
Consultation	—	\$20.50	\$25.50	\$30.50
Extraction, Anterior	—	\$28.50	\$33.50	\$38.50
Extraction, Posterior	—	\$68.50	\$73.50	\$78.50
Filling, Simple	—	\$30.00	\$35.00	\$40.00
Filling, Complex	—	\$50.00	\$55.00	\$60.00
Removable Denture, Complete (Upper or Lower)	\$170.50	\$256.50	\$261.50	\$266.50
Removable Denture, Partial, Simple (Upper or Lower)	\$65.50	\$98.00	\$103.00	\$108.00
Removable Denture, Partial, Complex (Upper or Lower)	\$140.00	\$210.00	\$215.00	\$220.00
Denture Reline/Repair (Upper or Lower)	\$50.00	\$75.00	\$80.00	\$85.00
Permanent Crown	\$84.50	\$127.50	\$132.50	\$137.50
Re-cementation	—	\$35.00	\$40.00	\$45.00
Root Canal Treatment (Anterior)	\$109.50	\$164.00	\$169.00	\$174.00
Root Canal Treatment (Pre-molar)	\$140.00	\$210.00	\$215.00	\$220.00
Root Canal Treatment (Molar)	\$170.50	\$256.50	\$261.50	\$266.50
Polishing	—	\$20.50	\$25.50	\$30.50
Scaling	—	\$30.00	\$35.00	\$40.00
Topical Fluoride	—	\$20.50	\$25.50	\$30.50
X-ray	—	\$11.00	\$16.00	\$21.00

Healthier SG Chronic Tier Subsidy Framework

Under the subsidy framework, Healthier SG enrollees who are CHAS, Pioneer Generation (PG) and Merdeka Generation (MG) cardholders can obtain common chronic medications at their enrolled Healthier SG GP clinics, at prices comparable to those at polyclinics.

The Healthier SG Chronic Tier will benefit CHAS/PG/MG cardholders who have higher medication needs and whose bills may exceed the current CHAS annual subsidy limits. Consult your enrolled GP on your suitability to use the Healthier SG Chronic Tier based on your medication needs.



CHAS

Your Buddy for Better Health

For all Singaporeans, regardless of age and income,
CHAS is your partner for accessible healthcare.

Receive subsidies for medical and dental care at
participating GP and dental clinics islandwide.

